



DNHPTD

Hand pumps for emergency operation

Hand pumps for emergency operation

Fixed

The fixed hydraulic hand pumps are usually mounted in the series with the critical valves, e.g.: the sea chest / fore peak tank valve.

- To be mounted directly on the actuator, on bulkhead or in watertight box on deck.
- Control valve for directional control.
- 2 x Isolation valves.
- 1 relief valve.
- 1-2 x Manometers for pressure indication.
- 2-20 litter oil reservoir.
- Dry weight from 7,5 kg.



Portable

The portable hydraulic hand pumps are used for manual override at either the solenoid valve cabinet or the valve location.

- Connection to solenoid valve cabinet or to emergency blocks mounted on actuator or on deck.
- Mounted on a frame with wheels for easy transport and operation.
- 1 - 3 meter flexible hoses with quick couplings.
- 1-2 x Manometers for pressure indication.
- 2-5 liters oil reservoir.
- Up to 250 bar pressure.
- Dry weight from 6 kg.



| | |
|---|---|
| <i>Maximum system working pressure</i> | 160 bar |
| <i>Maximum system test pressure</i> | 250 bar |
| <i>Maximum hand pump pressure</i> | 250 bar |
| <i>Safety valve setting</i> | 180 bar |
| <i>Weight with 5L oil</i> | 20 kg |
| <i>Oil displacement per double stroke</i> | 25 cm ³ |
| <i>Oil viscosity range</i> | 15 to 300 cSt |
| <i>Temperature range</i> | -15°C to 80°C |
| <i>Recommended temperature range</i> | NAS 1630/10 or ISO Solid Containment Code 18/15 |
| <i>Standard hose</i> | 3 m (Other hoses on request) |



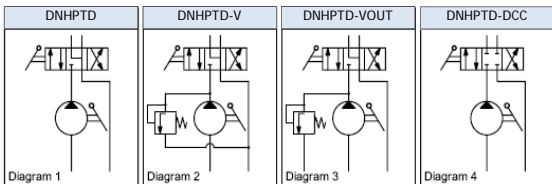
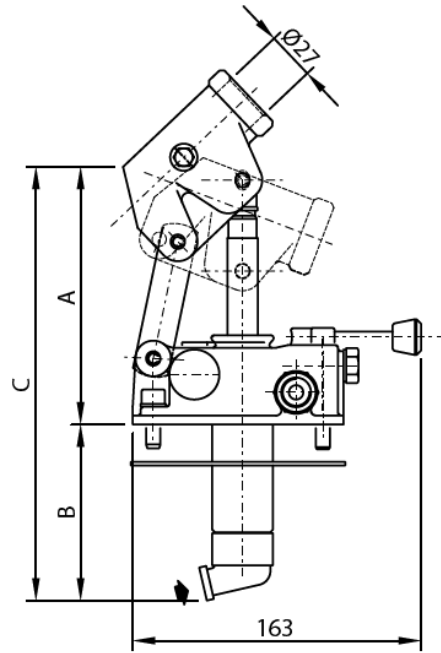
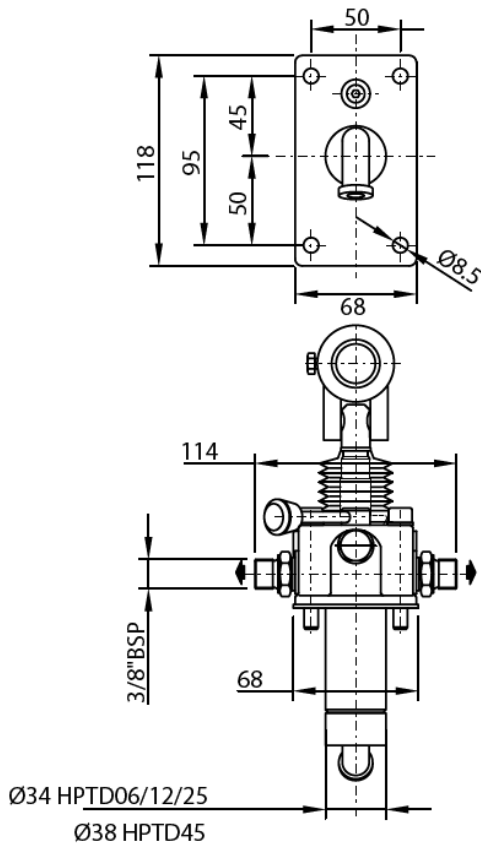
DNHP Series

Double acting hand pump with 4/3 diverter

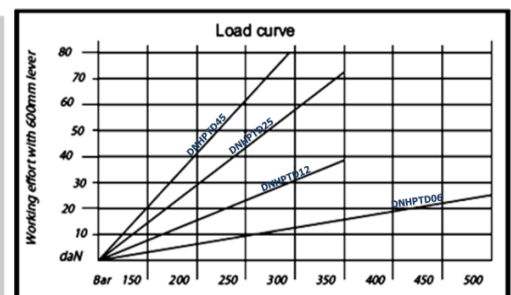
- » Double acting model with 4/3 diverter.
- » Flow 06, 12, 25 and 45 cc.
- » Flanged fixing for oil tank.

Variations

- » Available in four variations (refer to diagrams 1,2,3,4)



| Pump type | Flow | Pressure (bar) | | A | B | C | Weight |
|------------|-------|----------------|---------|-----|-----|-----|--------|
| | | Working | Maximum | | | | |
| DNHP TD 06 | 6 cc | 450 | 500 | 145 | 100 | 245 | 3.1 kg |
| DNHP TD 12 | 12 cc | 320 | 380 | 145 | 85 | 230 | 3.0 kg |
| DNHP TD 25 | 25 cc | 280 | 350 | 145 | 98 | 243 | 3.1 kg |
| DNHP TD 45 | 45 cc | 220 | 280 | 148 | 105 | 253 | 3.2 kg |

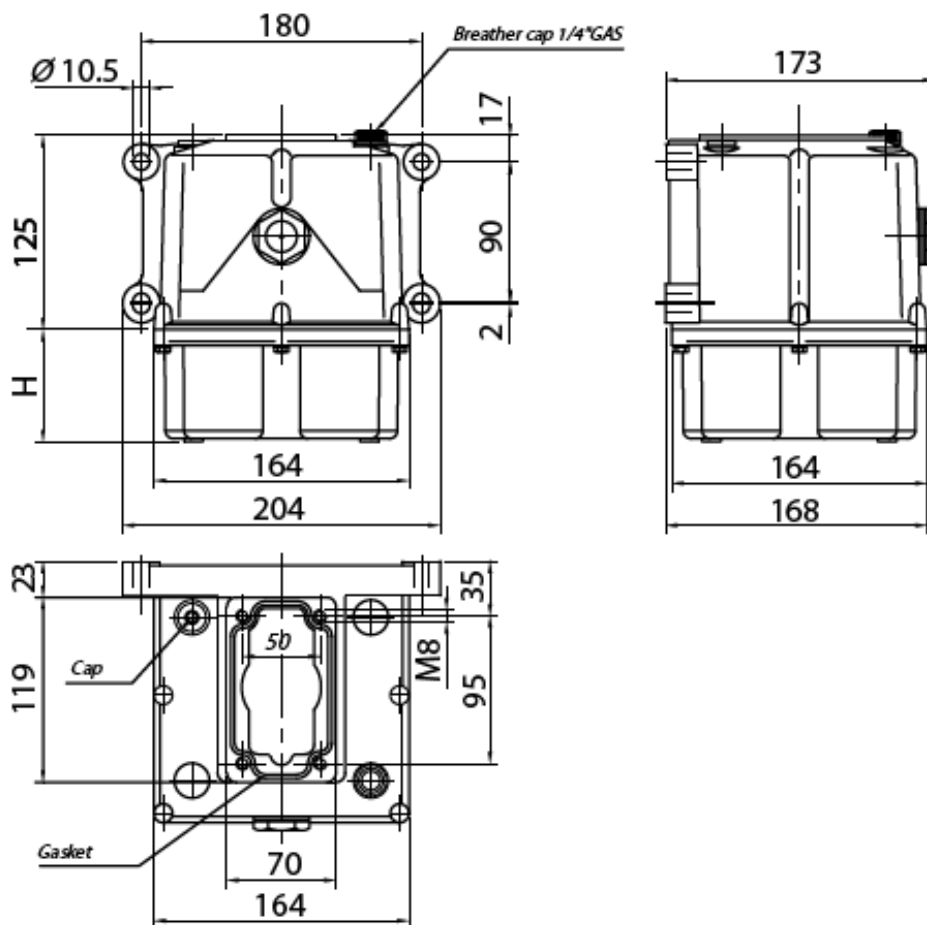




DN SR-AL Aluminium oil tanks

Cast aluminium oil tanks for had pumps

- * Cast aluminium tanks
- * Flow of 5 littles.
- * Standard top connector for mounting on hand pumps Series DNHPT - DNHPTD - HPTDVB.
- * Oil cap from 1/4" with breather vent.
- * Front draining cap from 1/4" BSP.



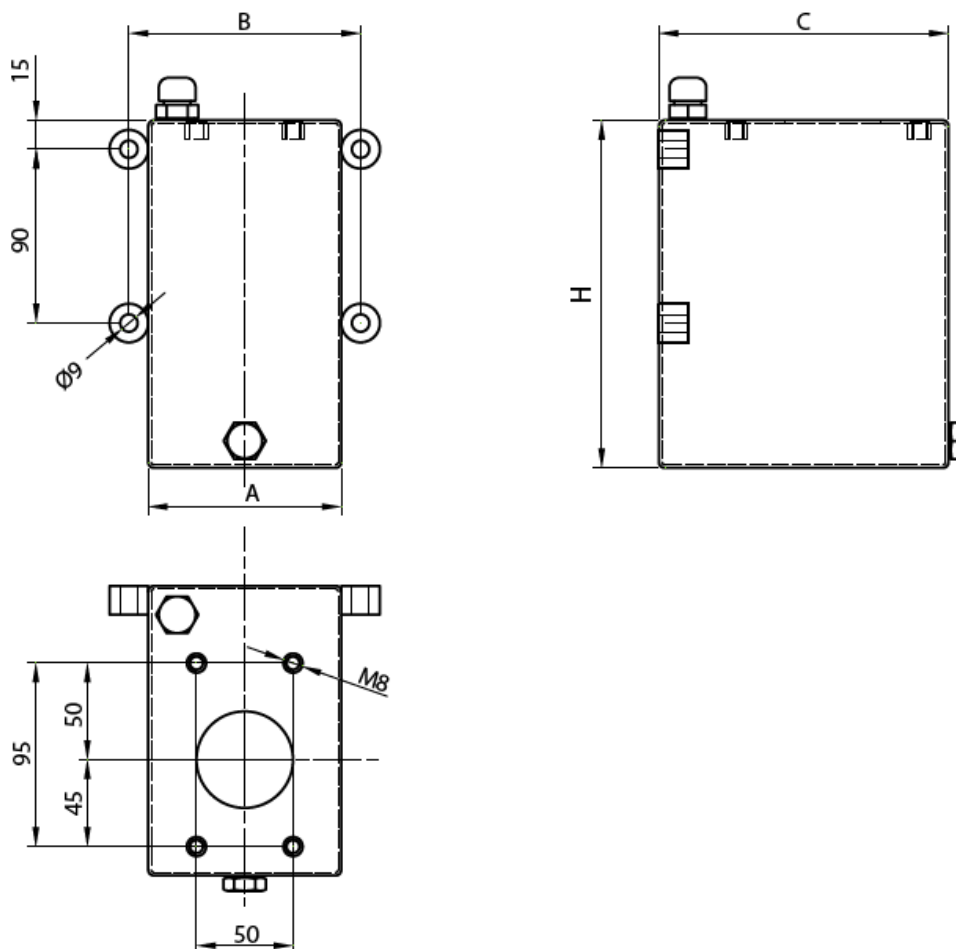
| Code | | Tank capacity (litres) | H (mm) | Weight (kg) |
|-------------------|----------------|------------------------|--------|-------------|
| Without oil level | With oil level | | | |
| DNSR 01AL | DNSR 01ALO | 1 | 40 | 1 |
| DNSR 02AL | DNSR 02ALO | 2 | 55 | 1,5 |
| DNSR 03AL | DNSR 03ALO | 3 | 70 | 1,6 |
| DNSR 05AL | DNSR 05ALO | 5 | 180 | 1,8 |



DN SLT Oil tanks

Oil tanks in painted iron for hand pumps

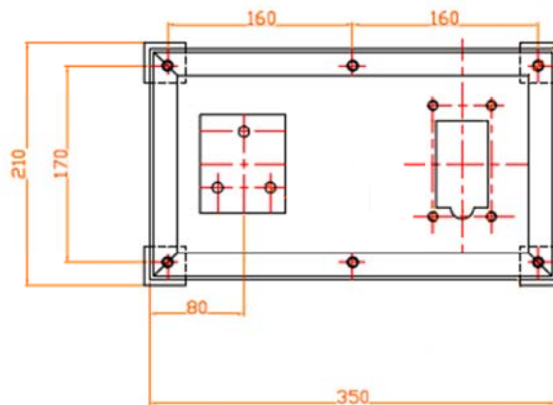
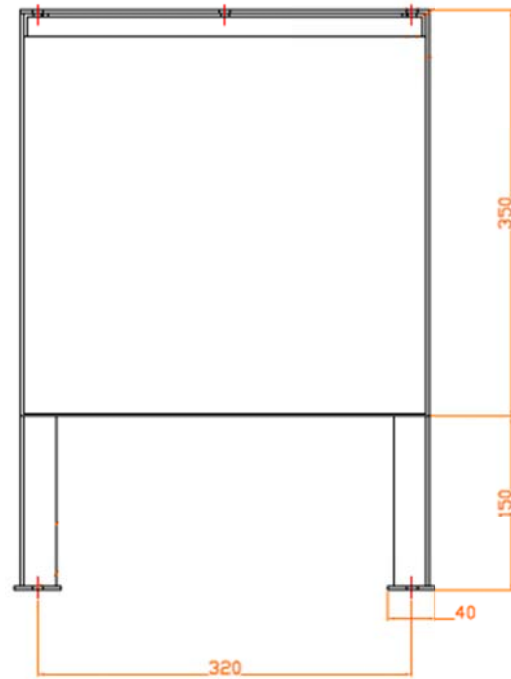
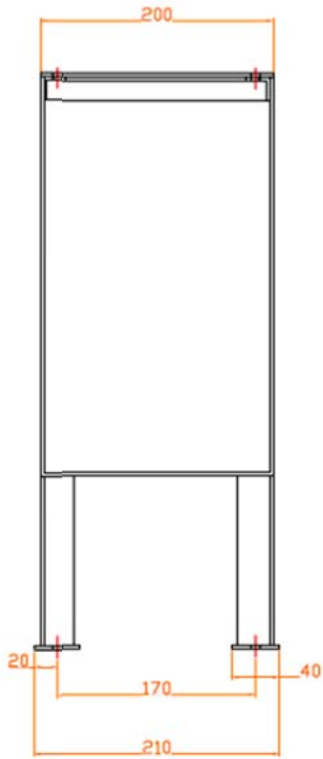
- * Iron oil tanks, painted black, with anti-corrosion treatment.
- * Standard top connector for mounting on hand pumps Series DNHPT - DNHPTD - HPTDVB.
- * Oil cap from 1/4" with breather vent.
- * Front draining cap from 1/4" BSP.
- * Fixing to wall.



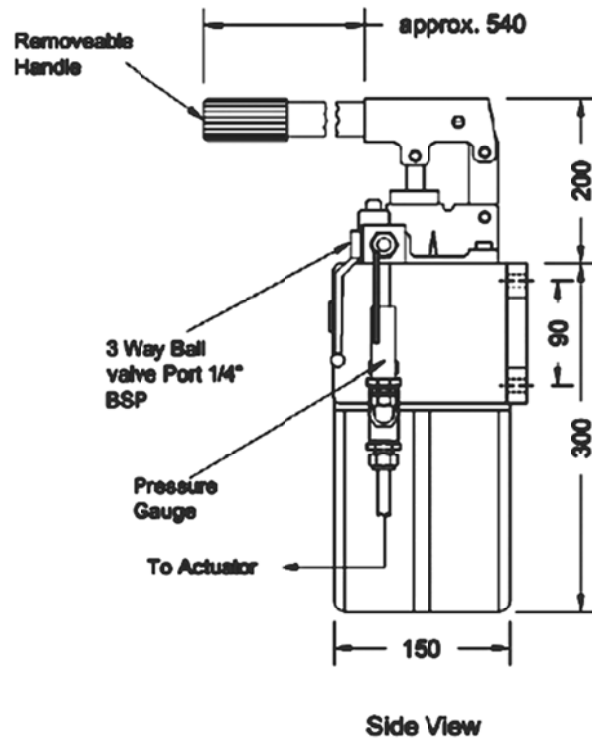
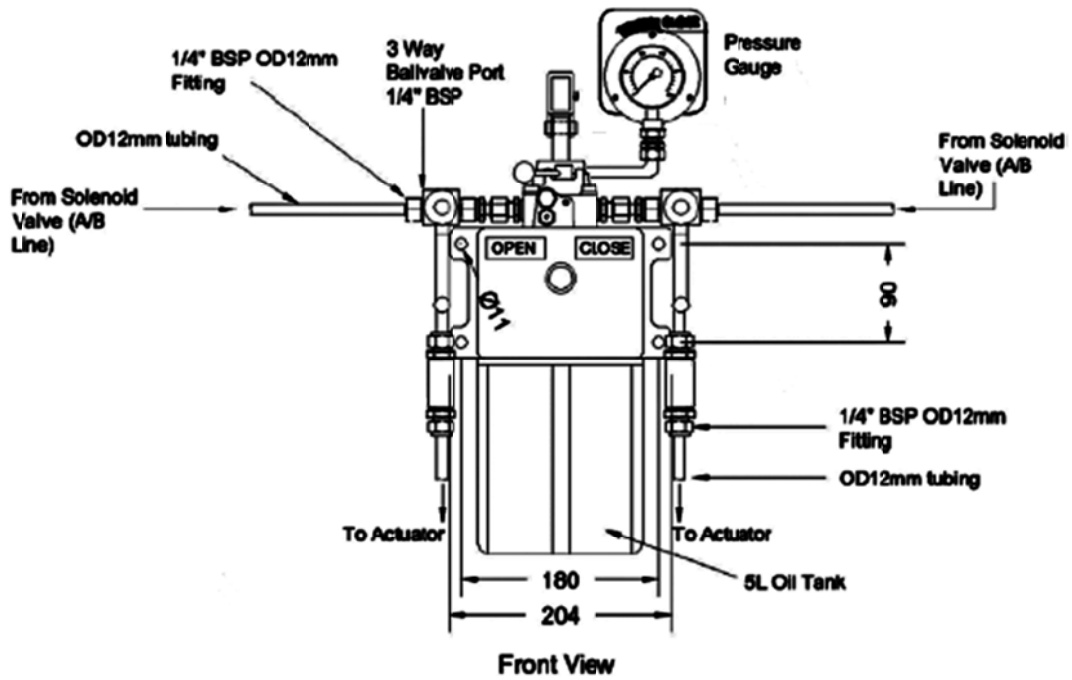
| Code | Tank capacity (litres) | A | B | C | D | E | H | Weight (kg) |
|-----------|------------------------|-----|-----|-----|-----|-----|-----|-------------|
| DNSLT001 | 1 | | | | | 145 | 120 | 2 |
| DNSLT002 | 2 | 100 | 120 | 150 | 90 | | 180 | 2,2 |
| DNSLT003 | 3 | | | | | | 245 | 2,5 |
| DNSLT005 | 5 | | | | | 145 | 200 | 4,5 |
| DNSLT007 | 7 | 175 | 195 | 175 | 110 | | 269 | 5,4 |
| DNSLT0010 | 10 | | | | | | 376 | 6,8 |

Optional

Oil tank for hand pump of 20 L - (with valve position indication)



Hydraulic fixed hand pump.



Hydraulic portable hand pump.

